

JAZZ, THE NEW FEELING OF STRESSLESS®



THE INNOVATORS OF COMFORT™

Stressless® Jazz

Size: Large

Chair, W: 36¹/₂" H: 40-44" D: 30¹/₄"

Seat Height: 16", 17³/₄", 19¹/₄"

Ottoman: W: 21¹/₂" H: 17³/₄" D: 14³/₄"

Size: Medium

Chair, W: 33" H: 39-43" D: 29¹/₂"

Seat Height: 15³/₄", 17¹/₂", 19"

Ottoman: W: 21¹/₂" H: 17³/₄" D: 14³/₄"



Adjust the Stressless Glide wheels to the setting you desire. You can automatically shift to any seating position by simply using your body weight.



The Stressless Jazz and ottoman can be adjusted to match your height by adding any of the three height rings.

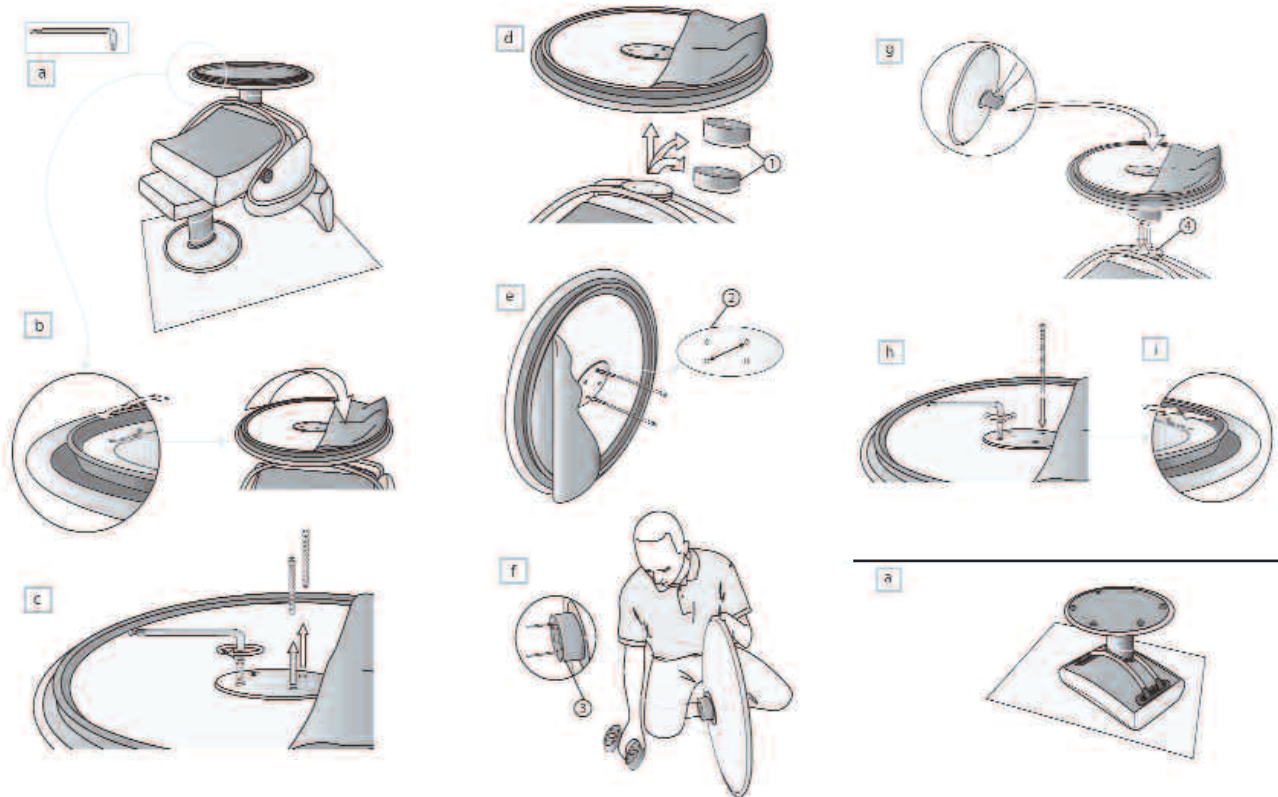
Assembly and Parts

Stressless[®] Jazz / Blues Assembly: Step 1 - Height adjustment on chair

- Place the chair so that it rests on the footstool with the base up.
- Unzip the cover underneath the base and pull aside.
- Loosen and remove the four screws from the base. The base and height disks are now separated from the chair (1).
- Lift the base off the chair, and remove the height-disks.
- To add rings, place two of the screws through the base in diagonal holes (2).
- Place desired number of height-disks on the screws. The metal edge (3) on top of the height-disks must be turned away from the base.
- Keep height-disks in place while the base is lifted over the chair, while aligning screws in the steel plate (4) on the chair frame.
- Place the remaining two screws in place.
- Tighten screws and zip the cover back on.

Stressless[®] Jazz / Blues Assembly: Step 2 - Height adjustment on ottoman

- Please see the assembly instructions for the chair.



Stressless[®] Jazz / Blues Parts List